

The components marked Δ conform to VDE or IEC guidelines and are essential for safe operation of the set, while those marked ∇ are required for correct operation. Use specified parts only when replacing.

NOTICE

Since this is a basic circuit diagram. The value of components and some partial connection are subject to be changed for improvement.

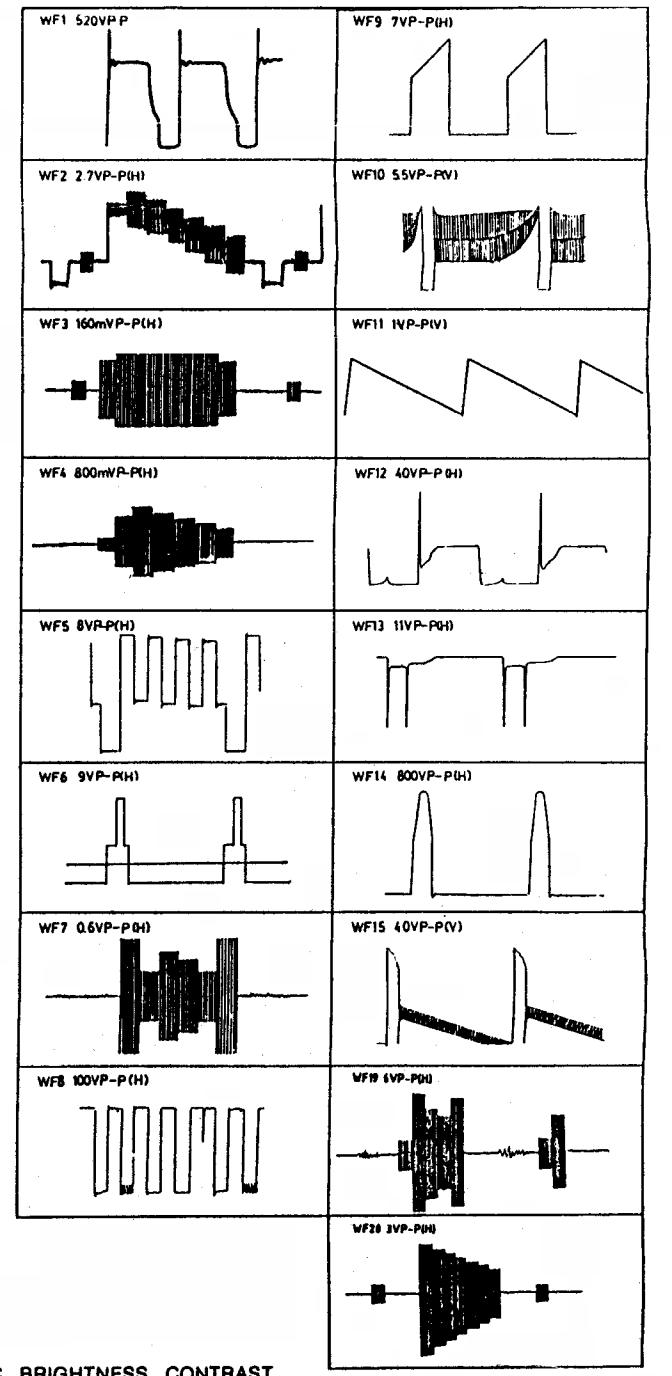
VALUE OF RESISTOR, CAPACITOR and INDUCTOR

1. Resistance is shown in ohm, k=1,000, M=1,000,000.
2. Unless other wise noted in schematic, all capacitor values less than 1 are expressed in mfd and the values more than 1 in pF.
3. Unless otherwise noted in schematic, all inductor values more than 1 are expressed in μ H, and the values less than 1 in H.

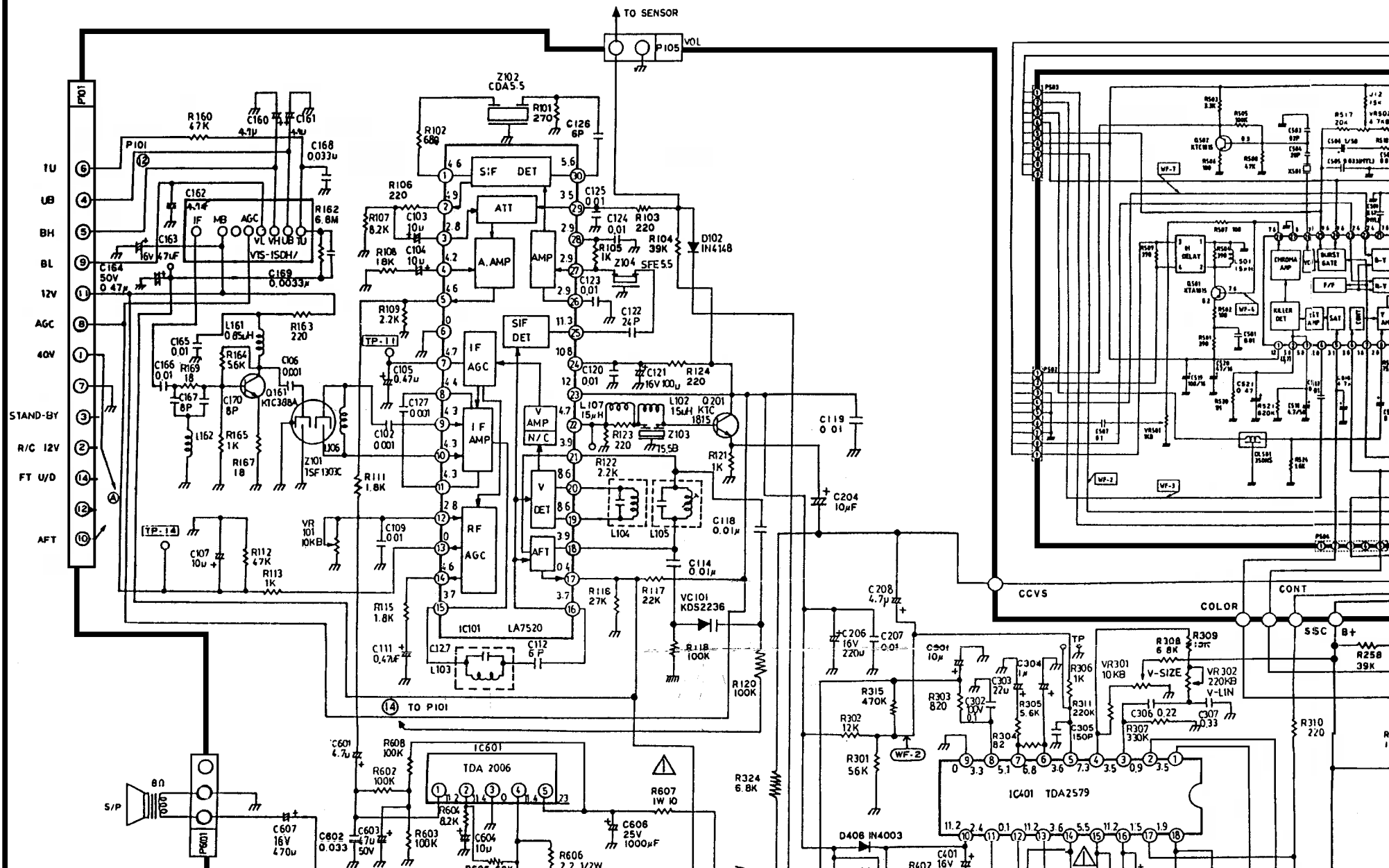
OBSERVATION OF VOLTAGES AND WAVEFORMS

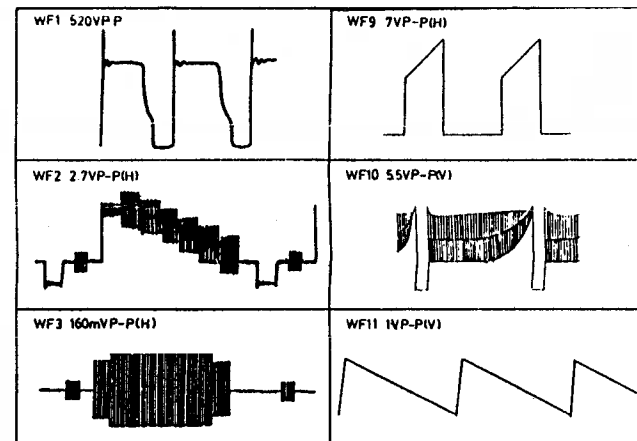
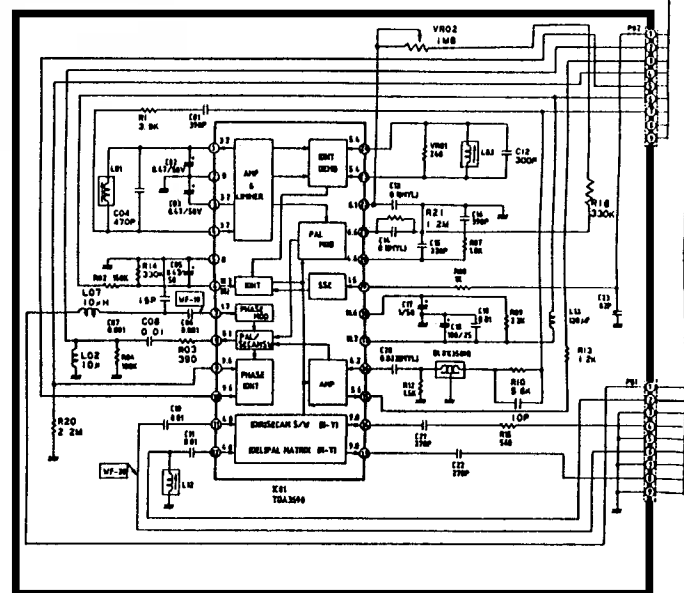
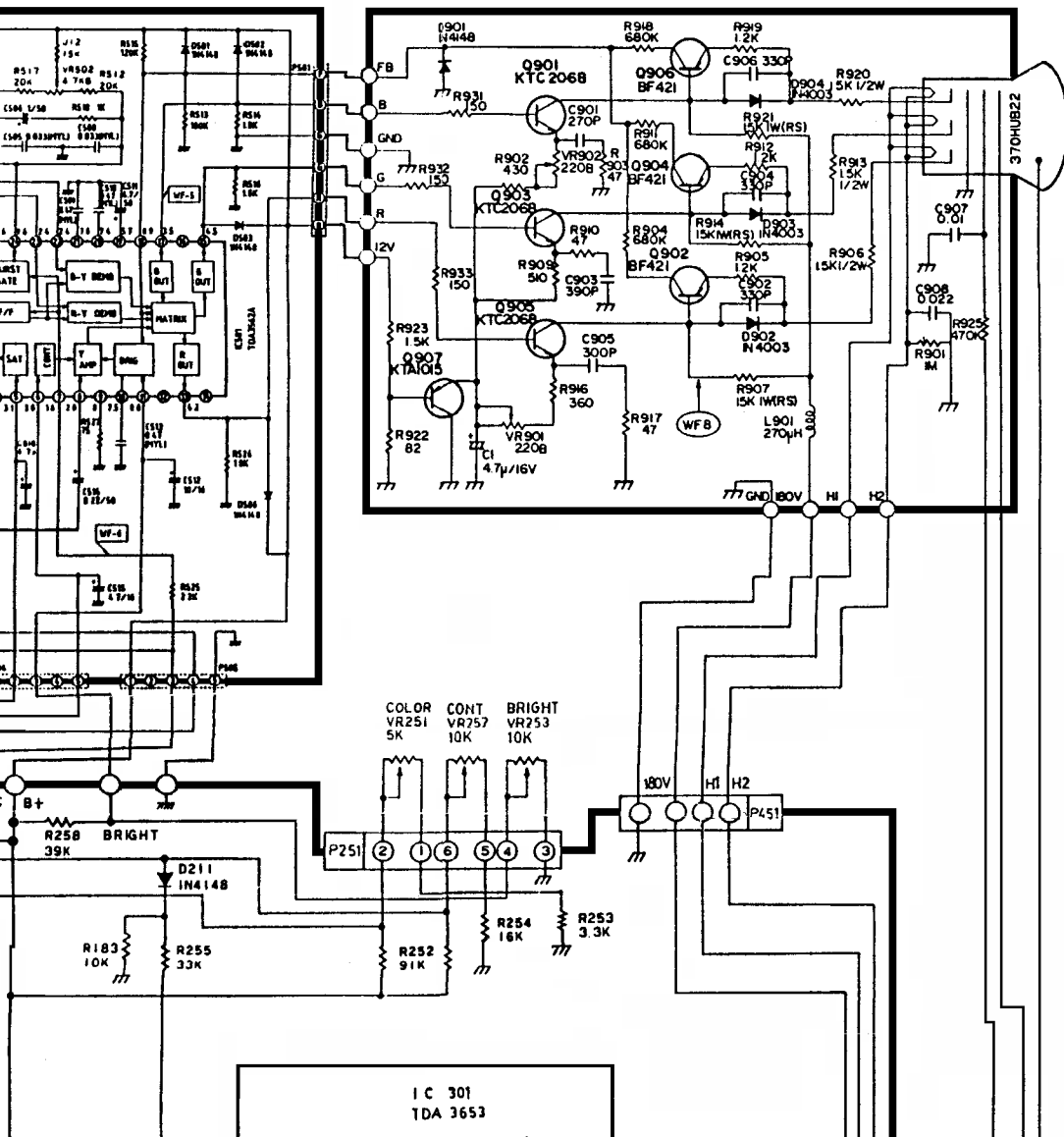
1. Voltages read with VTVM from point shown to chassis ground, line voltage 180~270V volts, colour bar signal.
2. Voltages reading may vary $\pm 20\%$.
3. The schematic shown is representative only.
4. All waveforms are taken using a wide band oscilloscope and a low capacity probe.

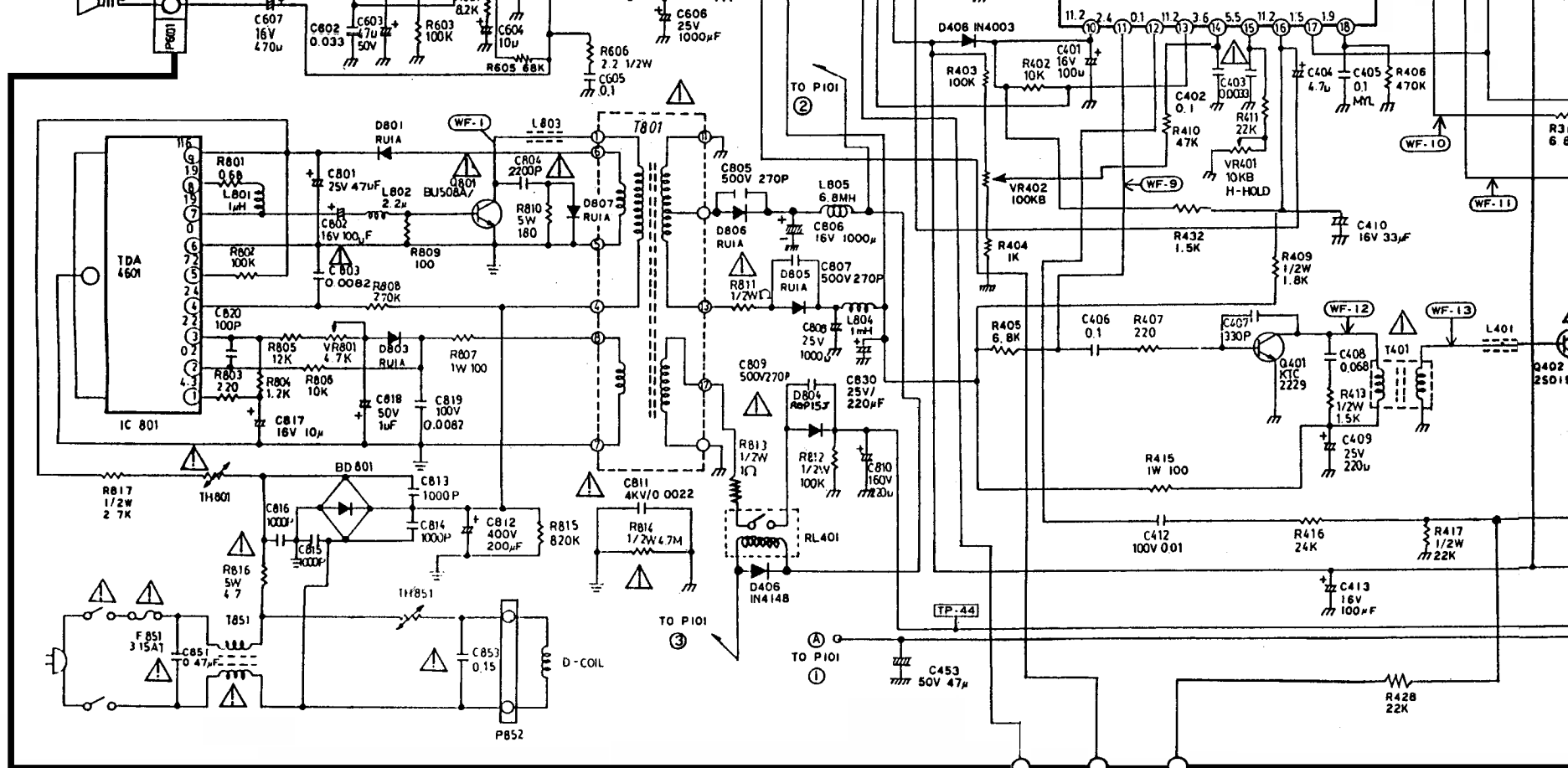
5. Check FINE TUNING, AGC, BRIGHTNESS, CONTRAST and COLOUR controls for best picture, make sure that CONTRAST and COLOUR controls are in mid position and BRIGHTNESS control is almost in maximum position.
6. Waveforms are taken using a standard colour bar signal.



UNIVERSUM FK4357







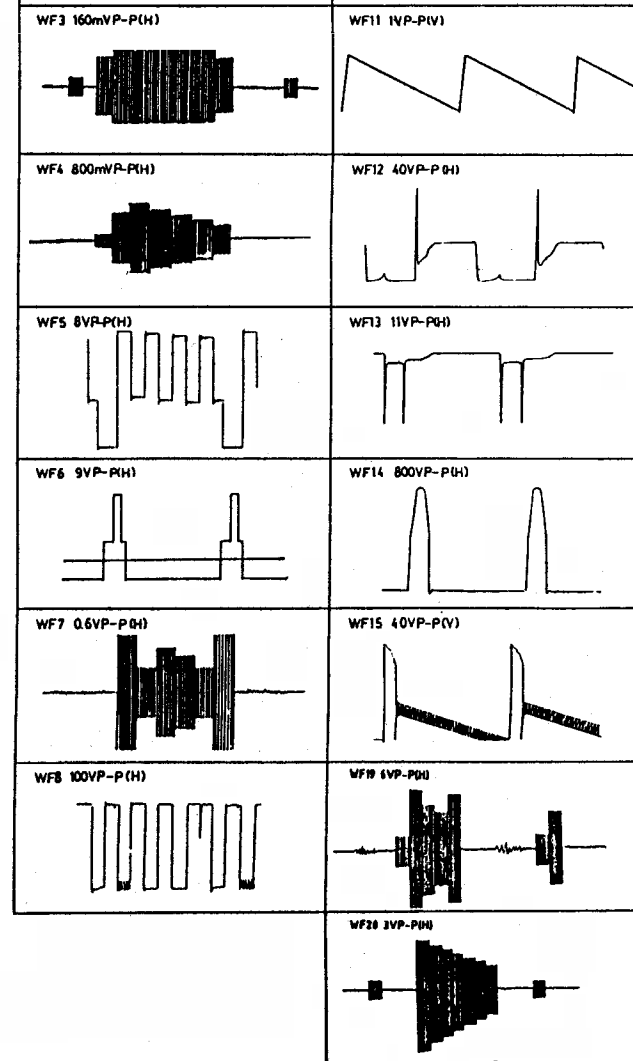
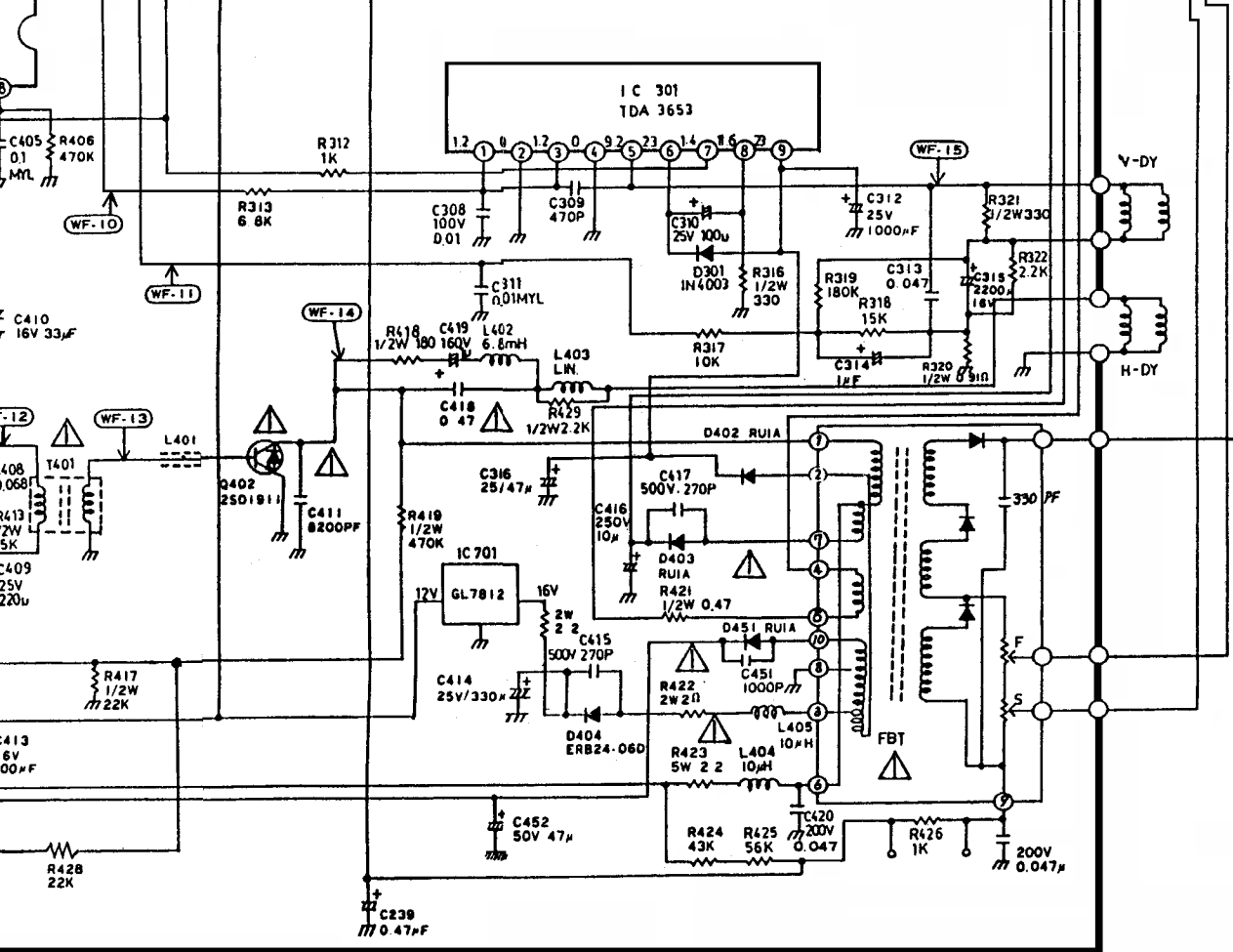
The components marked Δ conform to VDE or IEC guidelines and are essential for safe operation of the set, while those marked ∇ are required for correct operation. Use specified parts only when replacing.

NOTICE

Since this is a basic circuit diagram. The value of components and some partial connection are subject to be changed for improvement.

VALUE OF RESISTOR, CAPACITOR and INDUCTOR

1. Resistance is shown in ohm, k=1,000, M=1,000,000.
2. Unless other wise noted in schematic, all capacitor values less than 1 are expressed in mfd and the values more than 1 in pF.
3. Unless otherwise noted in schematic, all inductor values more than 1 are expressed in μ H, and the values less than 1 in H.



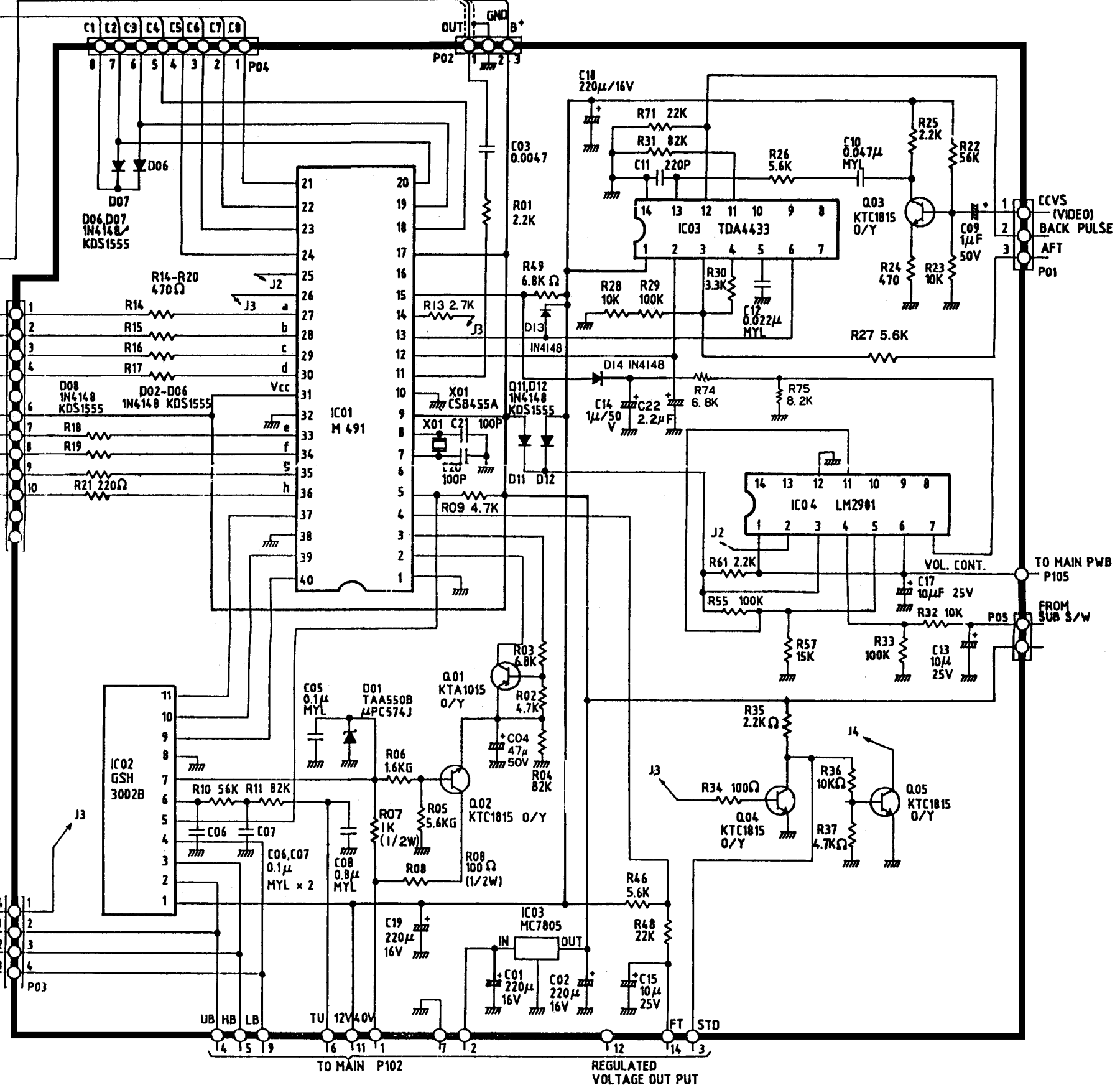
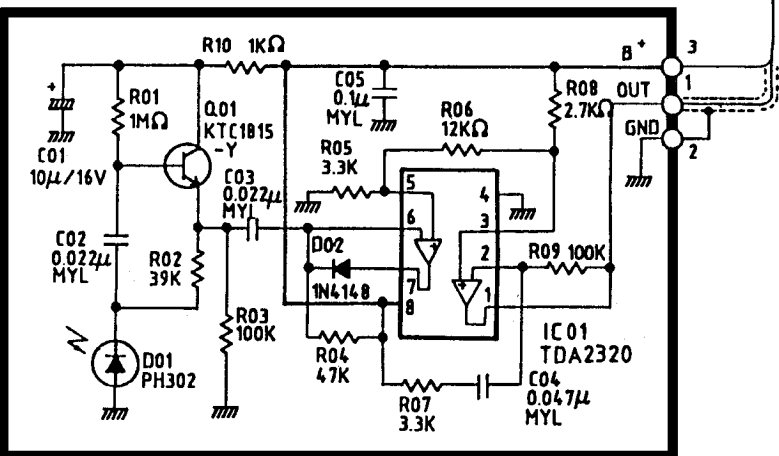
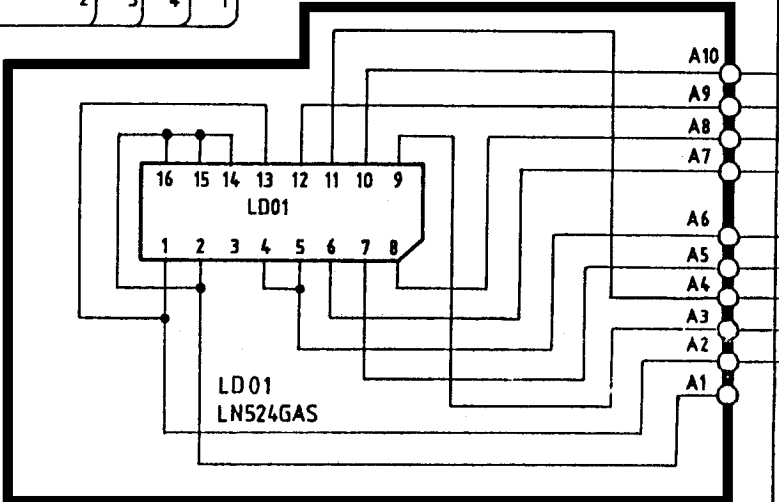
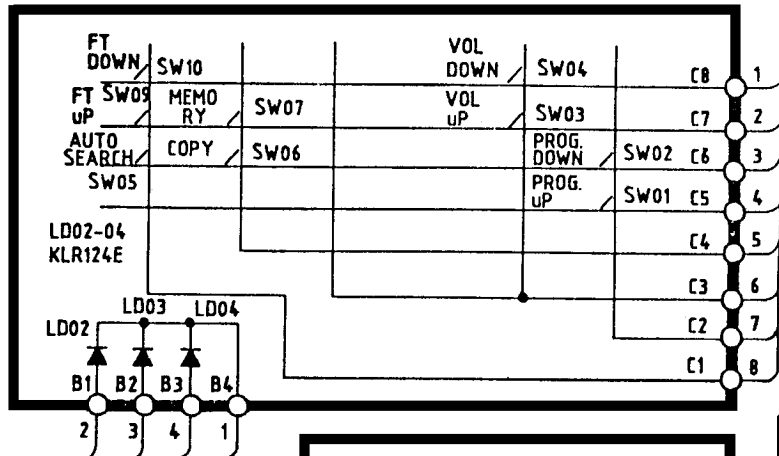
OBSERVATION OF VOLTAGES AND WAVEFORMS

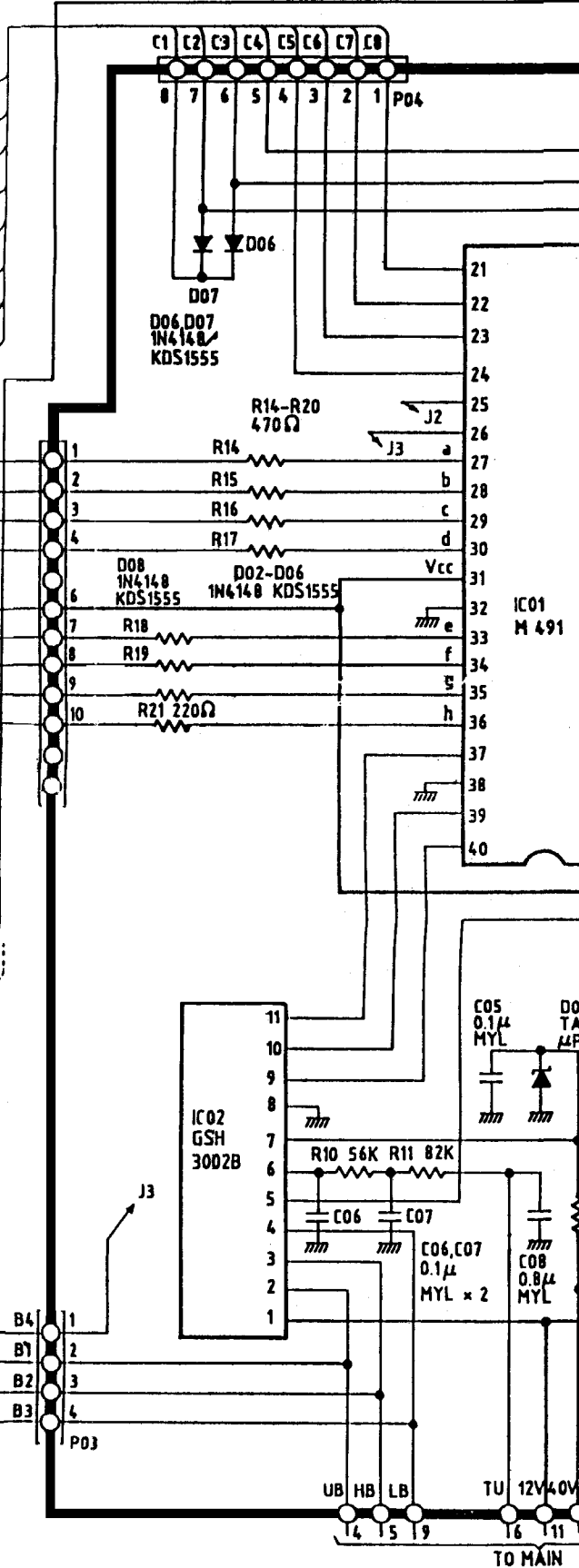
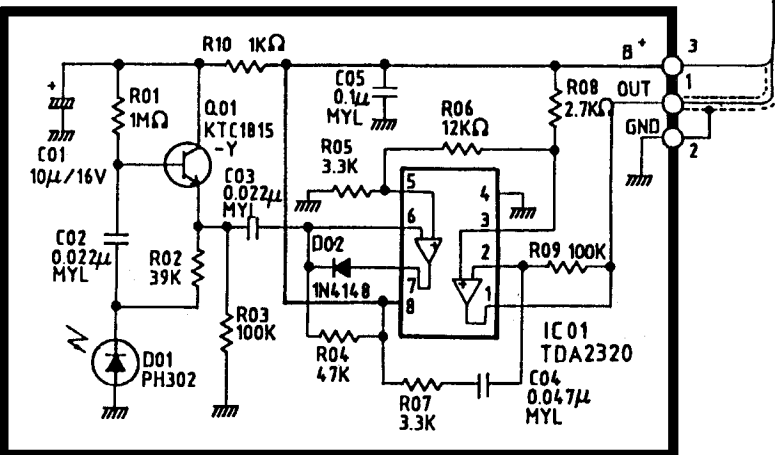
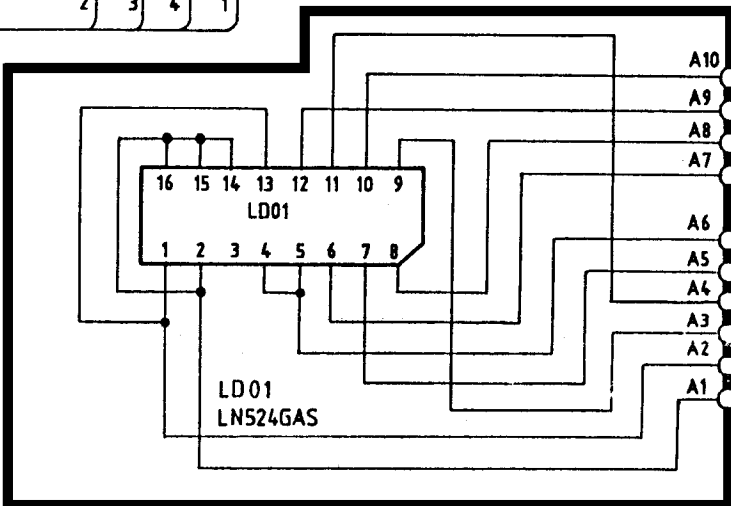
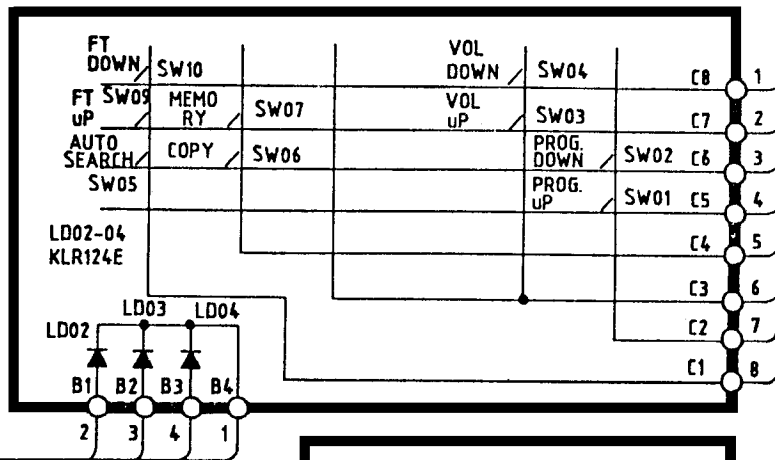
1. Voltages read with VTVM from point shown to chassis ground, line voltage 180~270V volts, colour bar signal.
2. Voltages reading may vary $\pm 20\%$.
3. The schematic shown is representative only.
4. All waveforms are taken using a wide band oscilloscope and a low capacity probe.

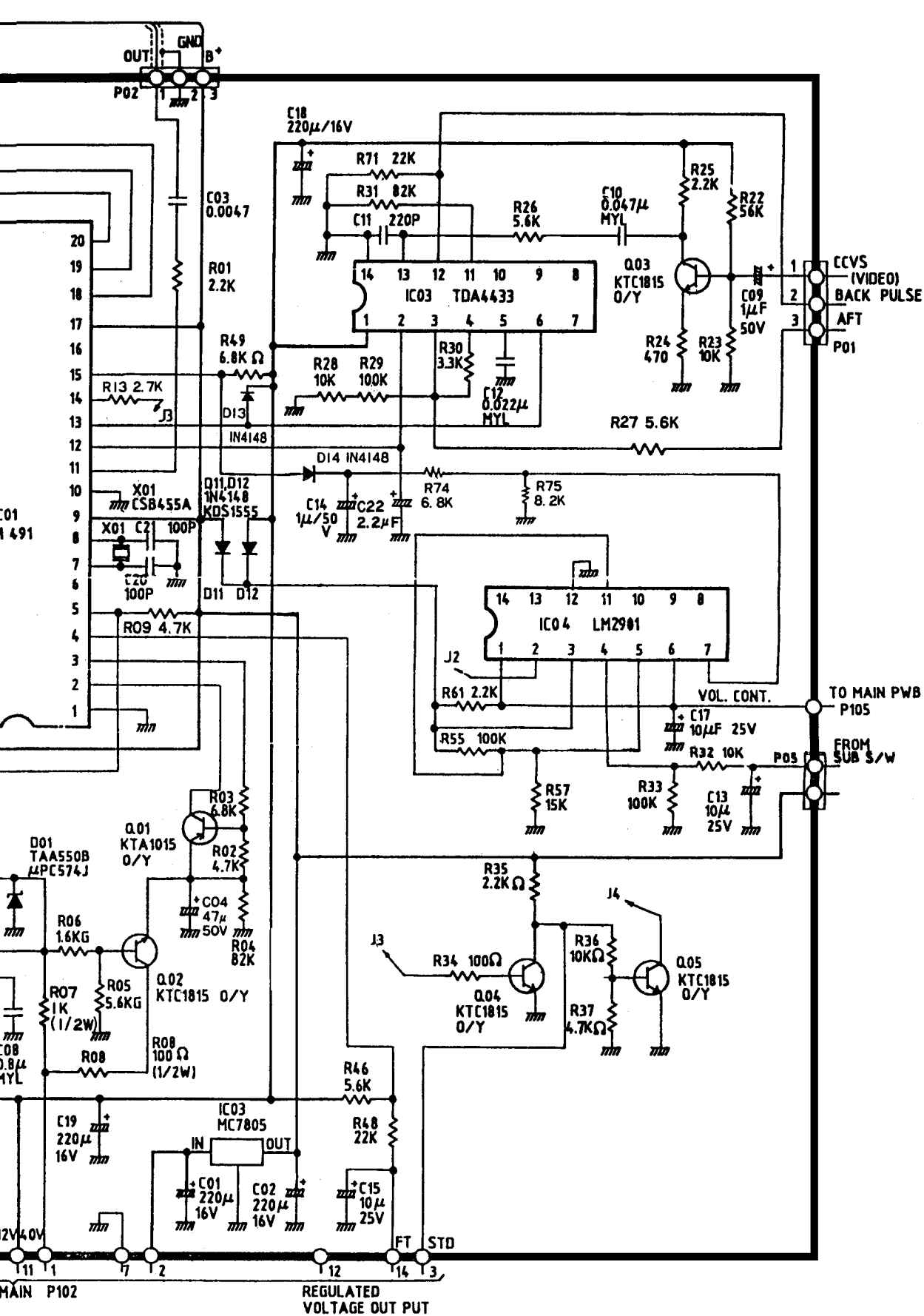
5. Check FINE TUNING, AGC, BRIGHTNESS, CONTRAST and COLOUR controls for best picture, make sure that CONTRAST and COLOUR controls are in mid position and BRIGHTNESS control is almost in maximum position.
6. Waveforms are taken using a standard colour bar signal.

UNIVERSUM FK4357

484-031B(1/2)







TX SCHEMATIC DIAGRAM

